



4227 S. Meridian
Suite C-363
Puyallup, WA 98373
(253) 929-0649

Darcie@Griefinc.com
www.griefinc.com

AMERICAN GRIEF ACADEMY® ACCREDITED CERTIFICATION PROGRAM

The **American Grief Academy®** was acquired by **Grief Inc.** in 2001 to provide education, resources and support for bereavement care providers worldwide. AGA's purpose is to provide a foundation of information and knowledge that enables caregivers to reach grieving individuals with knowledge, confidence and a clear understanding of grief.

All of our seminars are competency-based training for both the paraprofessional and professional. Graduates receive certification from the **American Grief Academy.®**

Courses range in length from one to four days and include didactic as well as experiential training. Our faculty members are leaders in the field of Thanatology and bring a wealth of experience and knowledge to their presentations.

Participants receive practical knowledge and tools that can be used immediately in their settings. In addition to classroom experiences, they have the opportunity to meet others in the field and develop personal support networks.

Whether your field is funeral service, nursing, social work, counseling, employee assistance or education, the **American Grief Academy®** can help you help those you serve and insure your continued success.

The **American Grief Academy®** certification programs are:

Grief Service Provider®
Grief Support Group Facilitator®
Grief Management Specialist®
Cemetery Grief Service Provider®
Military Grief Support Provider®
Insurance Industry Grief Support Provider®

These innovative programs provide a standard of care for grief professionals that are unparalleled.



GENERAL INFORMATION

OPEN ENROLLMENT

All classes of the **American Grief Academy®** are open to anyone desiring further education in the field of grief and bereavement. While no prerequisites exist for enrollment in any of AGA's classes, if certification is desired, then specific certification prerequisites must be met prior to enrollment. (See Specific Certification requirements). Call 253-929-0649 to enroll.

TRAINING FORMATS

AGA has both In-Residence as well as Distance Learning courses. In-Residence courses are completed on-site in Seattle, WA or at your site if 8 or more students enroll. Some courses are available in Distance Learning format, allowing for a self-paced, self-guided learning experience. Distance Learning kits are complete with manuals, books, DVDs, CDs and other educational resources. Most of our courses require completion of an on-line reading and test section prior to beginning either course format.

TUITION AND FEES

Tuition for courses at the **American Grief Academy®** are priced competitively and include 12 or 30 hours (depending upon course) of instruction, all course materials, coffee breaks and a consultation and support line. A \$150 non-refundable deposit reserves your seat. VISA, MasterCard, Discover or American Express, company or government purchase orders or personal checks are accepted.

- **The Grief Service Provider®** Certification and **Military Grief Support Provider®** is \$850 for either In-Residence or Distance Learning.
- **The Grief Management Specialist®** Certification is \$650.
- **The Grief Support Group Facilitator®** Certification is \$500.
- **Cemetery Grief Service Provider®** Certification is \$500.
- **Insurance Industry Grief Support Provider Certification®** is \$500.
- **Elective** Course tuition rates are \$500 per course for either In-Residence or Distance Learning.

Please see the price list in the back of this catalog.

Final payment is required 30 days prior to the course start date. No refunds for cancellations less than 10 days prior to start date.

IN-RESIDENCE TRAINING SCHEDULE

Multi-day classes begin on Thursday evening 7-9:00PM with Introductions and Orientation. We will begin each morning at 8:30AM, break for lunch 12-1PM and continue until 5PM. Friday and Saturday evening classes will be held from 6:30-9:30PM. Classes will be complete Sunday at noon, allowing for Sunday late afternoon departure. **ALL** sessions **must** be attended in order to obtain the Certificate of Completion and be eligible for certification.

Please make travel arrangements accordingly. Hotel accommodations will be available for those requiring lodging. Lodging and meals are the responsibility of participants and are available at the training site hotel and/or at numerous fast food outlets and restaurants in the local area.

GRIEF SERVICES PROVIDER[®] Certification

This is the first level of certification available through the **American Grief Academy[®]**. Upon completion of this training program, participants have a thorough understanding of the Grief Process. They will be able to assess community grief support services and run an existing aftercare program for funeral service, hospice bereavement care or begin to develop grief support services for a organization or community.

The **GRIEF SERVICES PROVIDER[®]** certification program is available both in Distance Learning and In-Residence formats. There are no examinations required, but competencies must be demonstrated throughout the coursework. A final project is required before the certification is awarded.

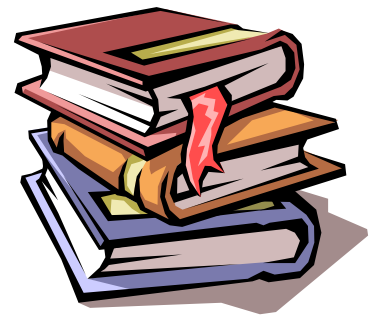
Students who elect to attend the In-Residence GSP certification course will enjoy the pace of the class as they examine the grieving process and explore the many options for grief education and support services. In 4 days (a long weekend) class work for certification can be completed. This course is offered yearly and can become the stepping-stone towards the more extensive **GRIEF MANAGEMENT SPECIALIST[®]** certification.

PREREQUISITES

There are no prerequisites for this certification program, but an application must be completed prior to enrollment. **A \$25 application fee is required.** Applications may be obtained from the AGA office. (253) 929-0649.

CREDIT

Each course is 30 hours in length. Contact hours and continuing education credits may be available for certain professions. AGA will supply course description, behavioral objectives, course content and a certificate of completion for each course completed.



CERTIFICATION

Upon completion of either the In-Residence or Distance Learning course, students are required to complete a course project and submit it for evaluation. Upon acceptance of the project, **American Grief Academy[®]** will grant certification as a **GRIEF SERVICES PROVIDER[®]**.

FINAL PROJECT

A final project is required for completion of the **GRIEF SERVICES PROVIDER®** certification. This project consists of outlining an element of a grief education and/or support program of the student's choice, including objectives, intentions, expectations of self and of participants, target participants, a program outline and resources necessary to implement the program. A complete budget and revenue stream plan will also be required as well as an evaluation tool or process. This project is intended to be a *working* project, which will result in a *functional* grief education and/or support program element.

RECERTIFICATION

In order to maintain a minimum standard of care, AGA requires that **4 hours** of continuing education in the field of Thanatology, psychology, social work, counseling, or aftercare must be obtained each year that certification renewal is requested. This will ensure AGA graduates maintain the high quality of knowledge and preparation that is the hallmark of **American Grief Academy.®** Hours must be submitted by the student as they are earned. A copy of a signed certificate of completion of any training course, along with the course outline, behavioral objectives and number of contact hours must be submitted for recertification credit. AGA will maintain student records and will record and review all such credits annually. A recertification seal will be issued on the date of renewal for each year recertification is sought.

If recertification is not sought or certification lapses, and later a student wishes to become recertified, AGA will require completion of 1 additional course from the AGA course curriculum.

A recertification application form may be obtained from the AGA office. **A \$25 fee must accompany the recertification application.**



For more information and an enrollment form, call 253-929-0649 or visit us online at www.GriefInc.com.



Satisfaction Guaranteed

COURSE DESCRIPTION

GRIEF SERVICES PROVIDER[®] Certification



This certification course is a two-part program, designed to provide a comprehensive orientation course in the grief process as well as a basic orientation in grief education and support services. The ***Understanding Grief*** section includes fundamentals of grieving, the adaptation process, grieving styles, coping mechanisms, family dynamics, historical and cultural perspectives of grief. Variances in the grieving process will be addressed. Personal exploration of attitudes towards death and grief will be explored as well. Most of the content for this part of the course will be done through our On-Line coursework. It must be completed ***PRIOR*** to attending the In-Residence class or moving through the Distance Learning course work.

CONTENT:

- The Process of Change and Adaptation
- The Grieving Process
- The Myths of Grief
- Personality and Grieving Styles
- The Variables in Grief
- Cultural Aspects of Grief

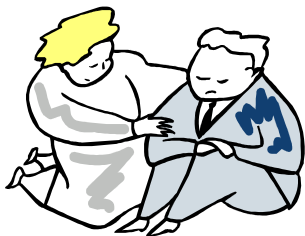
The ***Grief Education and Support Services*** section includes the philosophy of support services, community assessment skills, program materials evaluation and selection process, basic program developmental skills including budgeting, planning and evaluation.

CONTENT:

- Philosophy of Grief Support Services
- Myths About Setting Up and Running a Grief Support Program
- Community Assessment Skills
- Initial and Follow-Up Program Options
- Evaluation of Program Materials
- Building Networks and Community Resources

A final project is required for completion of the **GRIEF SERVICES PROVIDER[®]** certification. (see Page 5). This certification program is a ***hands-on, working*** course!

Grief Support Group Facilitator® Training

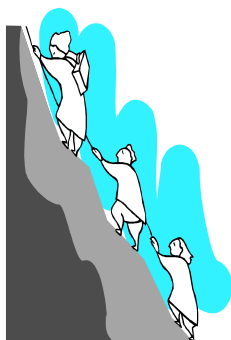


Learn the elements and options of bereavement support programs and how to build effective groups. Explore group dynamics and discover how to facilitate support groups. Extensive program ideas will be shared and program outlines created. Learn group assessment skills as well as how to make appropriate referrals. Group facilitation and leadership skills will be practiced and evaluation techniques will be included. You'll never hesitate to run groups again! ***This course is available only In-Residence.***

Upon completion of this training program, you will become a **Certified Grief Support Group Facilitator.®** Certification renewal requires **4 hours** per year.

YOU WILL LEARN:

- A New Language for Grief
- Elements of Successful Groups
- Program Ideas
- Liability Issues
- Group Membership Criteria
- Effective Tools for Starting and Ending Groups
- How and When to Make Referrals
- Evaluation Tools and Techniques
- Listening Skills
- The Role of a Facilitator
- Group Dynamics
- How to Structure Groups
- How to Build Trust and Cohesiveness
- Boundaries and Limitations of Groups and Facilitators
- Skills for Positive Grief Resolution



Exploration of personal grief issues will be included as part of the facilitator training in order to help participants identify their own issues, strengths and areas of concern.

The price for this class is **\$500**, which includes all materials and instructor support.

For more information and an enrollment form, call 253-929-0649 or visit us online at www.GriefInc.com.

GRIEF MANAGEMENT SPECIALIST[®] CERTIFICATION

This is an advanced certification program, designed for those who work or who are seeking employment in the field of bereavement services, in a funeral home setting, a hospice program, a school district, mental health clinic or in private practice. It is a comprehensive program, one of the first of its kind in the nation. It is available only In-Residence.

Two core courses are required and an additional elective course complete the program. While no examinations are required, an extensive project is required prior to certification.

PREREQUISITES

Before enrolling in the **GRIEF MANAGEMENT SPECIALIST[®]** certification program, participants must have completed the **Grief Services Provider[®]** Certification Training by the **American Grief Academy[®]** or demonstrate the equivalent education, training and experience.

All certification candidates must complete an application. **A \$25 application fee is required.** Students who have not completed the AGA **Grief Services Provider[®]** certification program may petition AGA for evaluation of their training credits by preparing a curriculum vitae, professional resume and providing 2 professional references. Partial credit may be awarded and admission to the advanced certification program may be granted once any course deficiencies are corrected. **An additional \$125 fee (per course) is required if course exemption petitions are also submitted.**

CREDIT

Each course is 12-30 hours in length. Contact hours or continuing education credits may be available for certain professions. It is up to the student to apply to his/her professional association for continuing education credits. AGA will supply course description, behavioral objectives, course content and a certificate of completion for each course completed.

CERTIFICATION

Upon completion of the 2 core courses and 1 additional elective course, students will be required to complete a course project and submit it for evaluation. Upon successful completion of the project, the American Grief Academy will grant certification as a **GRIEF MANAGEMENT SPECIALIST®**.

FINAL PROJECT

A final project is required for completion of the **GRIEF MANAGEMENT SPECIALIST®** certification. This project requires an outline of a complete grief education or support program, describing objectives, intentions, expectations of self and of participants, target participants, an outline of program elements and resources necessary to implement the program. A simple budget and revenue stream plan is also be required as well as an evaluation tool or process. This project is intended to be a *working* project, which will result in a *functional* grief education or support program.

RECERTIFICATION

In order to maintain a minimum standard of care, the **American Grief Academy®** requires that **8 hours** of continuing education in the field of Thanatology, psychology, social work, counseling, or aftercare must be obtained each year that certification renewal is requested. This will ensure AGA graduates maintain the high quality of knowledge and preparation that is the hallmark of the **American Grief Academy.®** Hours must be submitted by the student as they are earned. A copy of a signed certificate of completion of any training course, along with the course outline, behavioral objectives and number of contact hours must be submitted for recertification credit. AGA will maintain student records and will record and review all such credits annually. A recertification seal will be issued on the date of renewal for each year recertification is sought.

A recertification application form may be obtained from the AGA office. **A \$25 fee must accompany the recertification application.** If recertification is not sought or certification lapses, and later a student wishes to become recertified, AGA will require an additional class from the AGA course curriculum to be completed.

COURSE WORK FOR GRIEF MANAGEMENT SPECIALIST[®]

(see Course Descriptions for complete details)

REQUIRED CORE COURSES: (In-Residence ONLY)

**Combined Group Dynamics and Facilitation Skills and
Caring Overload**

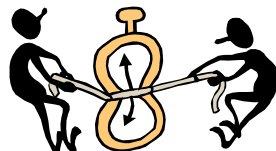
ELECTIVE COURSES (1 course required for certification)

- **What Color Is Dead? How to Help Grieving Children** (available In-Residence or in Distance Learning format)
- **How To Be A Dynamic and Effective Speaker** (In-Residence only)

COMING SOON



- **Beyond the Basics of Grief: Complicated Issues of Trauma, Suicide, Homicide, Long Term Illness**
- **Dollars and Sense: Marketing, Public Relations, and Creative Financing for Bereavement Programs**
- **Death Takes A Seat in the Classroom**
- **Grief Counseling Skills Training** (for licensed counselors or social workers only)
- **Grief Goes to Work: Grief in the Workplace**
- **Grief Resource Centers: The *Wave* of the Future**
- **Rituals Right or Rituals Ruined**
- **Health Care Grief Support**
- **Clergy Grief Support**



AMERICAN GRIEF ACADEMY® EXEMPTION OPTION

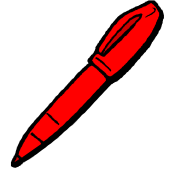
The **American Grief Academy®** wishes to recognize the work that many professionals in the field of grief and bereavement have accomplished prior to enrolling in the **GRIEF MANAGEMENT SPECIALIST®** certification program. In order to accomplish this recognition, the **American Grief Academy®** offers an “Advanced Placement Option” for the elective course requirement.

Applications will be examined to determine which credits will be applied toward the **GRIEF MANAGEMENT SPECIALIST®** certification. Applications for advanced placement will be reviewed by the AGA faculty and credits applied towards the appropriate certification. An Advanced Placement fee of \$125 per course is required.

Applications require documentation of coursework, training programs, continuing education credits received and a summary of work experience in the field of bereavement support or aftercare. (See Advanced Placement Application)



Application for Advanced Placement AGA Certification Courses



Name_____

Organization_____

Title_____

Street Address_____

City_____State_____Zip_____

Day Time Phone_____Fax_____

E-mail Address_____

AGA course being petitioned for exemption_____

Please write a 1000-1500 word synopsis of the work you have completed which you believe qualifies you for exemption from an AGA course. Please include:

- Your interpretation of the course objectives from the course work you have completed.
- What you have learned from the course work completed.
- How you are applying (or will apply) what you have learned.

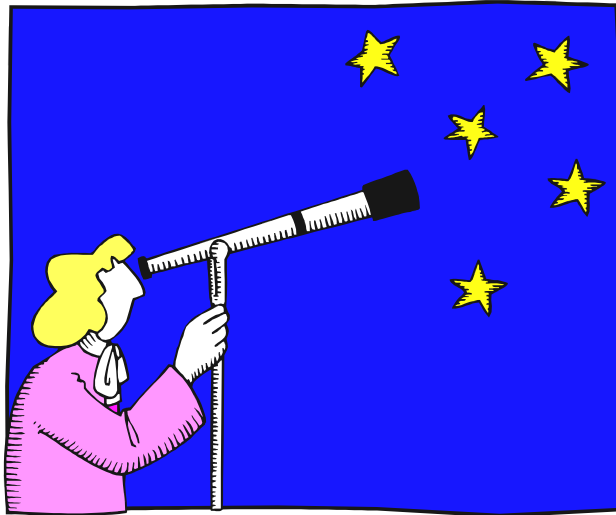
A complete Application for Exemption must include:

- Completed application form
- Resume or curriculum vitae
- Certificate of Completion for course work
- Course outline and behavioral objectives for courses completed
 1. Send a copy of the workshop / course announcement & agenda.
 2. Send a copy of the faculty information.
- 1000-1500 word synopsis of completed work
- \$125 application fee per course

An Application for Exemption must be completed for EACH AGA course you wish to petition. Please send your completed Application for Exemption to:

American Grief Academy
Attn: Exemptions
4227 S. Meridian Suite C-363
Puyallup, WA 98373-5963

AMERICAN GRIEF ACADEMY®



**For information and reservations
CALL 253 929-0649**

COURSE DESCRIPTIONS

GRIEF MANAGEMENT SPECIALIST®

CERTIFICATION

The GMS Certification course is a two-part program, designed to provide information about group facilitation and caregiver self-care. The ***Group Facilitation*** section will provide basic group management and facilitation skills training. Learn the elements and options of bereavement support programs and how to build effective groups. Group facilitation and leadership skills will be practiced.

CONTENT:

- Listening Skills
- Group Dynamics
- The Role of a Facilitator
- How to Structure Groups
- Effective Tools for Starting and Ending Groups
- How and When to Make Referrals
- Liability Issues
- Evaluation Tools and Techniques
- Program Ideas
- Facilitation Practice



The ***Caring Overload*** section is designed to provide care for the caregiver while developing skills that will help with personal growth and stress management. Participants will learn to tap into their inner source of wholeness and how to help others find their own well-spring of strength, compassion and capability. Come to be re-charged, re-energized, renewed!

CONTENT:

- Expectations of Self and Others
- The Dynamics of Caring Overload
- Elements of a Healing Environment
- Self-assessment Tools
- Creating a Personal First Aid Kit for
- Building Success for Yourself and Others



ADDITIONAL CERTIFICATION CLASSES

(In-Residence only)

Cemetery Grief Service Provider[©]
Military Grief Support Provider[©]
Insurance Industry Grief Support Provider[©]

Cemetery Grief Service Provider[©]

This 2-part certification program is designed to give participants information, tools and skills to enhance the understanding of the grieving process and to foster development of strategic interventions for those being served by the cemetery staff. Participants will explore and dispel the myths about grief and bereavement and examine the grieving process. Students will learn a quick, easy and accurate method of understanding and identifying specific differences in coping styles and how to utilize this knowledge to create effective service delivery programs.



In order to deliver effective, quality and compassionate service, it is important to be able to rapidly assess a client's grief coping mechanisms and needs. "One Size Fits All" does not apply to quality service delivery.

In addition to the information concerning grief and bereavement, this certification course will also address the issues of staff coping with "loss accumulation stress." Students will learn to identify their own personal responses to accumulated stress and develop tools to lessen its negative effects.

CONTENT:

- **The Myths of Grief**
- **Understanding The Grief Process**
- **The Language of Grief: The Language of Hope**
- **Different Coping/Grieving Styles**
- **Needs of the Bereaved Client in Early Grief**
- **Tailoring Effective Service Delivery**
- **Supporting the Bereaved Client**
- **Strategies for Coping with Staff Loss Accumulation Stress**

Military Grief Support Provider®

This certification program is designed to give participants information, tools and skills to enhance the understanding of the grieving process and to foster development of strategic interventions and support systems for those supporting families of military casualties. Participants will explore and dispel the myths about grief and bereavement and study the grieving process. Students will learn a quick, easy and accurate method of understanding and identifying specific differences in coping styles and how to utilize this knowledge to create effective service delivery programs.

In order to deliver effective, quality and compassionate service, it is important to be able to rapidly assess a client's grief coping mechanisms and needs. "One Size Fits All" does not apply to quality service delivery.

In addition to the information concerning grief and bereavement, this certification course will also address the issues of staff coping with "loss accumulation stress." Students will learn to identify their own personal responses to accumulated stress and develop tools to lessen its negative effects.

CONTENT:

- **The Myths of Grief**
- **Understanding The Grief Process**
- **The Language of Grief: The Language of Hope**
- **Different Coping/Grieving Styles**
- **Needs of the Bereaved Client in Early Grief**
- **Tailoring Effective Service Delivery**
- **Supporting the Bereaved Client**
- **Strategies for Coping with Staff Loss Accumulation Stress**



Insurance Industry Grief Support Provider®

This certification program is designed to give participants information, tools and skills to enhance the understanding of the grieving process and to foster development of strategic interventions and support systems for those receiving insurance compensation benefits following the injury or death of a client. Participants will explore and dispel the myths about grief and bereavement and study the grieving process. Students will learn a quick, easy and accurate method of understanding and identifying specific differences in coping styles and how to utilize this knowledge to create effective service delivery programs.

In order to deliver effective, quality and compassionate service, it is important to be able to rapidly assess a client's grief coping mechanisms and needs. "One Size Fits All" does not apply to quality service delivery.

In addition to the information concerning grief and bereavement, this certification course will also address the issues of staff coping with "loss accumulation stress." Students will learn to identify their own personal responses to accumulated stress and develop tools to lessen its negative effects.

CONTENT:

- **The Myths of Grief**
- **Understanding The Grief Process**
- **The Language of Grief: The Language of Hope**
- **Different Coping/Grieving Styles**
- **Needs of the Bereaved Client in Early Grief**
- **Tailoring Effective Service Delivery**
- **Supporting the Bereaved Client**
- **Strategies for Coping with Staff Loss Accumulation Stress**



ELECTIVE COURSE DESCRIPTIONS

What Color is Dead? How to Help Grieving Children

(Available in both In-Residence and Distance Learning Formats)

Grief isn't just for grown-ups. Little hearts need mending too! This program is designed to create understanding in how children perceive death, how they respond to loss and how they grieve. A comprehensive overview of death from a child's view will be given as well as developmental stages of grieving behaviors. Information on ways to create support systems for bereaved children will be shared as well as extensive program ideas and strategies for helping heal the hurts.

CONTENT:

- How Children Respond to Death and Loss
- Developmental Stages of Children's Understandings of Death
- Signs and Symptoms of Stress in Grieving Children
- Concerns of Surviving Children
- Sibling Loss, Parental Loss, General Loss
- Strategies for Positive Grief Resolution
- Programming & Ceremonies for Children



Death Takes A Seat in the Classroom (In-Residence Only)

Death has come to the classroom in violent ways in recent years. How can we help children learn to cope with the losses and hurts they experience instead of ignoring them until they explode into violent behaviors? This HOW TO course on developing grief response programs and teams within a school system will discuss intervention goals, objectives and the stages necessary to create a first line of defense for any death-related incident. Action plans, program elements, time lines and training guidelines will be given. A MUST for anyone working with schools!

CONTENT:

- Trauma, Crisis and Grief Definitions
- Children's Grief Responses
- Elements of Effective Response Programs
- Building Internal Response Programs
- Techniques for Responding to Grief Reactions
- Program Ideas for Student Groups
- Evaluation Tools and Techniques



Beyond the Basics of Grief: Complicated Issues of Trauma, Suicide, Homicide, Long Term Illness (In-Residence Only)

This course will move beyond the basic concepts of grief and bereavement. It will cover a wide variety of specialized topics including the reactions from death from trauma, suicide or homicide. It will address grief issues such as death from Long Term Illness and Pregnancy Loss as well. A new language of grief will be discussed and specific interventions will be studied



CONTENT:

- The Grief Process Revisited
- A New Language for Grief
- Complicating Factors in Bereavement
- Major Issues and Differences in Grief Reactions: Suicide, Homicide, Sudden, Accidental, Long Term Illness, SIDS, Miscarriage, Stillbirth, AIDS
- Interventions
- The New Grief of Terrorism

Rituals Right or Rituals Ruined (In-Residence Only)

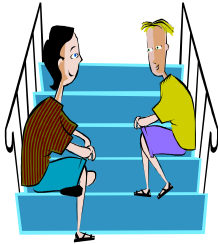
Rituals can play an important part in the healing process, but they require careful planning and orchestration in order to be effective. Rituals done well are wonderful, but poor planning can lead to "ritual ruin" and destroy the healing aspects of a ceremony. This course will explore the world of rituals and special programming for the bereaved and includes some of the tricks for successful rituals. We will examine the planning process, elements and secrets of program success, and budgets and marketing. Students will participate in a number of rituals and have the opportunity to create one as well.

CONTENT:

- The Philosophy and Value of Ritual
- Elements of a Successful Ritual
- Planning Steps
- Budgeting and Marketing
- Holidays and Special Day Programming
- Participate in a Variety of Rituals
- Create a Personal Ritual of Healing



Grief Counseling Skills Training (In-Residence Only)



(for licensed counselors, therapists, psychologists or social workers only)

This course is designed for licensed professional counselors (LPC) or social workers (BSW, MSW, etc) who wish to add to their knowledge about grief and grief counseling. It will address a variety of grief issues including but not limited to: the grief process, specialized grief situations, debriefing skills for trauma victims and disaster workers and therapeutic interventions for positive grief resolution. Practical applications as well as didactic materials will be presented. Designed to add grief counseling skills to an already established professional counselor. (a copy of your advanced degree and/or license is required prior to enrollment)

CONTENT:

- The Grief Process and Adaptation to Impending Change
- Therapeutic Interventions for Positive Grief Resolution
- Listening to The Story
- Client Evaluation Tools
- Liability Issues

Grief Goes to Work (In-Residence Only)

This innovative program will prepare you to help employers and employees cope with grief in the workplace. Designed to assist Employee Assistance Programs, Mental Health Workers, Supervisors, Employers or anyone working with the workforce to provide information, education and support for grieving employees. Organizational assessment, policy development and implementation of a support system will be presented as well as the skills needed to design a customized program for any work site.

CONTENT:

- The Myths of Grief in the Workplace
- Organizational Assessment of Services
- Management Roles in Grief Support
- Creating a Healing Environment at Work
- Building Support Programs at the Work Site
- The *First Line of Defense*



Dollars and \$ense: Marketing, Public Relations, and Creative Financing for Bereavement Programs (In-Residence & Long Distance Learning Formats)

Designed for aftercare or follow-up bereavement care providers, this training will provide an in-depth look at advanced budgeting strategies, marketing ideas and new and creative ways to extend services throughout a community.



Your program doesn't have to be a "throw away cost" or a drain on the resources of a firm. All aspects of marketing, public relations and financing an aftercare program will be covered. If you love being innovative with finances and want to fund an aftercare program creatively, this course is for you! A must course for those interested in increasing their market share and enhancing public relations and community awareness of their programs!

CONTENT:

- Making Your Aftercare/Follow-Up Care Program Profitable
- Budgets: The Mysteries and the Magic
- The Marketing Process
- Effective Use of Public Relations
- How to Get the Most Bang for Limited Bucks
- Effective Advertising in All Media
- Roadblocks, Setbacks and Success Stories

How To Be A Dynamic and Effective Speaker (In-Residence only)

This training program is designed to help you plan, prepare and present several different types of speaking programs. Lots of practice is included as well as evaluation tools and individual consulting time with the instructor. It's fun!

CONTENT:

- Types of Presentations
- Format and Goals of Presentation
- Objectives
- Getting Organized
- First Aid For Bumps and Bruises
- How to Evaluate the Presentation and the Presenter
- Do's and Don'ts



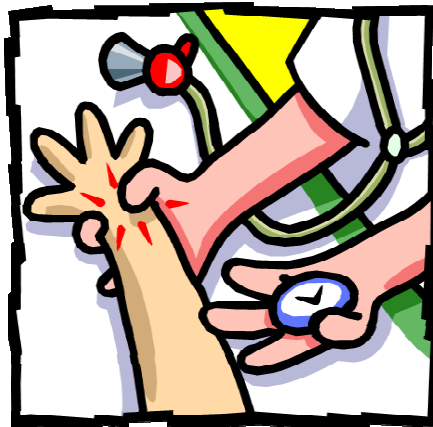
Health Care Grief Support **(In-Residence only)**

This course is designed to give participants information, tools and skills to enhance the understanding of the grieving process and to foster development of strategic interventions for those being served by the health care community. Participants will explore and dispel the myths about grief and bereavement and examine the grieving process. Students will learn a quick, easy and accurate method of understanding and identifying specific differences in coping styles and how to utilize this knowledge to create effective service delivery programs.

This course will also address the issues of staff coping with “loss accumulation stress.” Students will learn to identify their own personal responses to accumulated stress and develop tools to lessen its negative effects.

CONTENT:

- The Myths of Grief
- Understanding The Grief Process
- The Language of Grief: The Language of Hope
- Different Coping/Grieving Styles
- Needs of the Bereaved Client in Early Grief
- Tailoring Effective Service Delivery
- Supporting the Bereaved Client
- Strategies for Coping with Staff Loss Accumulation Stress



Clergy Grief Support

(In-Residence only)

This course is designed to give participants information, tools and skills to enhance the understanding of the grieving process and to foster development of strategic interventions for those being served by the clergy. Participants will explore and dispel the myths about grief and bereavement and examine the grieving process. Students will learn a quick, easy and accurate method of understanding and identifying specific differences in coping styles and how to utilize this knowledge to create effective service delivery programs.

This course will also address the issues of staff coping with “loss accumulation stress.” Students will learn to identify their own personal responses to accumulated stress and develop tools to lessen its negative effects.

CONTENT:

- The Myths of Grief
- Understanding The Grief Process
- The Language of Grief: The Language of Hope
- Different Coping/Grieving Styles
- Needs of the Bereaved Client
- Tailoring Effective Service Delivery
- Supporting the Bereaved Client
- Strategies for Coping with Staff Loss Accumulation Stress



Grief Resource Centers: The *Wave* of the Future **(In-Residence only)**

When you are ready to take the next step into the future, this course is for you. Here is an innovative and creative way to provide grief resources for the bereaved in your community.

This class will take you, step by step, through the process of community assessment, space design, product selection, budgeting, marketing strategies and creative programming. You will learn the hows and whys of creating a profitable grief resource center for your community. This is a “nuts and bolts” course that will help you develop a blueprint for creating a state of the art grief resource center.

CONTENT:

- Community Assessment Tools
- Budgets That Work
- Design Magic: The Where and How of Space Utilization
- Product Selection, Purchase and Inventory Management
- Product Placement and Design
- Effective Marketing Strategies
- Creative Programming
- Roadblocks, Setbacks and Success Stories



AGA INFORMATION FACT SHEET

For Quick Reference (for full details, see Course Catalog)

6 certifications: Grief Services Provider®
Grief Support Group Facilitator®
Grief Management Specialist®
Cemetery Staff Grief Support Specialist®
Insurance Industry Grief Support Provider®
Military Grief Support Provider®

Tuition: \$500 per Elective Course
\$850 Grief Service Provider Certification (either In-Residence or Distance Learning)
\$650 Grief Management Specialist Certification
\$500 Grief Support Group Facilitator
\$500 Cemetery Staff Grief Support Specialist®
\$500 Insurance Industry Grief Support Provider®
\$850 Military Grief Support Provider®

\$150 non-refundable deposit required

Number of Courses Required:
Grief Services Provider (GSP) (self contained course)
Grief Management Specialist (GMS) 1 self-contained course
1 elective course

Self contained course:

- **Group Dynamics and Facilitation**
- **Caring Overload**

Elective Courses:

- **What Color is Dead? How to Help Grieving Children**
- **Dollars and \$ense: Marketing, Public Relations, and Creative Financing for Bereavement Programs**
- **Grief Goes to Work**
- **Rituals Right or Rituals Ruined**

- **Beyond the Basics of Grief: Complicated Issues of Trauma, Suicide, Homicide, Long Term Illness**
- **Death Takes A Seat in the Classroom**
- **Grief Counseling Skills**
- **Grief Resource Centers: The *Wave* of the Future**
- **Clergy Grief Support**
- **Health Care Grief Support**
- **How To Be A Dynamic and Effective Speaker**

Enrollment: Open to anyone seeking information & education about grief.

If seeking certification, application is required.

Fees: Enrollment = \$25 application fee + tuition
 Course Exemption fee = \$125 per course request
 Recertification fee = \$25 per year

Hours: Each course is 12 or 30 hours in length (depending upon course). Multi-day classes meet Thurs. evening-Sunday noon. All sessions **MUST** be attended.

GSP = 45 hours of classroom instruction
GSGF = 24 hours of classroom instruction
GMS = 80 hours of classroom instruction